



SANJEEVAN

ENGINEERING & TECHNOLOGY INSTITUTE, PANHALA

(Degree, PG, & Diploma)

EN 6315



Approved by AICTE, New Delhi, Recognized by DTE,
Affiliated to DBATU, Lonere & MSBTE, Maharashtra.

ADMISSIONS OPEN

Admission Facilitation Center (FC)/
Scrutiny Center (SC) Facility Available

VISION

- ▶ SETI to Educate to Excel in Social Transformation.

MISSION

- ▶ To inculcate academic excellence in pursuit of technical education & to strive hard for good academic Result & Placements.
- ▶ To attract, nurture and to retain the best faculty and technical Manpower.
- ▶ To develop the holistic personality of students to be a responsible citizen with ethical values and lifelong learning.
- ▶ To Promote industry institute interaction for employability and entrepreneurship.

SANJEEVAN GROUP OF SCHOOLS

Somwar Peth, Panhala, Dist. Kolhapur-416201 (Maharashtra-India)

www.seti.edu.in admission@seti.edu.in

www.sanjeevan.edu.in 9158893049, 7769042033, 9421975403, 9673748282, 9765922586.



*The best way to predict
your future is to create it...*

Shri. P. R. Bhosale
Hon'ble Chairman



*Develop a passion for learning.
If you do, you will never cease to grow...*

Shri. N. R. Bhosale
Hon'ble Jt. Secretary



*Purpose of education is to replace
an empty mind with an open one...*

Dr. Mohan B. Vanarotti
Principal

DR. BABASAHEB AMBEDKAR TECHNOLOGICAL UNIVERSITY, LONERE.



- राज्यस्तरीय तंत्रशास्त्र विद्यापीठाकडून (Autonomous) महाविद्यालयाप्रमाणे B. Tech/ M. Tech पदवी.
- राज्यपातळीवर एकच उच्च दर्जाचा अभ्यासक्रम ● प्रत्यक्ष प्रात्यक्षिकावर आधारित गुणवत्तेची हमी.
- आंतरराष्ट्रीय विद्यापीठाशी सामंज्यस करारामुळे ऑनलाईन तंत्रज्ञानाच्या आधारे उच्च तंत्रज्ञानाचा सखोल अभ्यास
- अनुत्तीर्ण विद्यार्थ्यांचे त्वरीत फेरपरीक्षेमुळे वर्ष वाया जाण्याची भिती नाही.
- द्वितीय वर्षापासून मुक्त ऐच्छिक विषयाची संधी. ● नामांकित शासकिय संस्था व उद्योगामध्ये नोकरीची संधी.
- महाविद्यालय व विद्यार्थी हितासाठी विद्यापीठ विभागीय कार्यालयांची सोय.

UNIVERSITY RANK HOLDERS

Vishwajeet Bhosale



1st Rank
Mechanical

Abhishekh Raorane



1st Rank
Automobile

Adarsh Halade



4th Rank
Automobile

Ashitosh Raut



8th Rank
Automobile

Sudhir Avadan



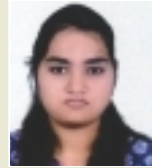
1st Rank
Mechanical

Noman Darwajkar



3rd Rank
Automobile

Priyanka Bandargal



5th Rank
Automobile

Vishwajit Rhykar



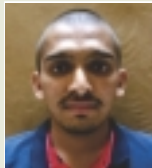
6th Rank
Mechanical

Snehal Patil



8th Rank
Mechanical

Prasad Chavan



9th Rank
Mechanical

Renu Patil



9th Rank
Automobile

Tejashree Divase



1st Rank
Electrical

Amol Solase



4th Rank
Electrical

Suyash Bhosale



3rd Rank
Electrical

Suyog Borage



9th Rank
Electrical

Supriya Patil



1st Rank
Electrical

First Year - Under Graduate Courses (B. Tech)

Courses Name	Intake	Course Code
Civil Engineering	60	631519110
Computer Science & Engineering	60	631524210
Electrical Engineering	60	631529310
Mechanical Engineering	60	631561210

Post Graduate Courses (M. Tech.)

Courses Name	Intake
Mechanical Engineering (Design)	18

Diploma Engineering

Courses Name	Intake	Course Code
Electrical Engineering	60	631529320
Mechanical Engineering	60	631561220



- Tradition of bagging MSBTE & University Ranks.
- Special Scholarship at Institute level for outstanding students.
- Experienced, qualified and dedicated staff.
- Govt. Scholarship / Freeship for all eligible students.
- Training cell for competitive examination.
- Excellent placement track records.



OUR ALUMNI - OUR PRIDE

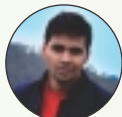
We have a lot, few of them are...



PRATIK MOHITE
Asst. Inspector,
Dy. RTO office, Baramati



NAVANATH PANDHARE
Police Sub-Inspector
Maharashtra Police.



SANTOSH PATIL
Sonovision Aetos Technical
Services, Netherlands



AMIT KAMAT
Marine Engineer
Central Govt. of India.



HARSHAD SIDAWADKAR
Sr. Product Design Engg.,Emerson
Innovation Center Emerson
Automation Solutions, Pune.



VIVEK KASHID
Design Engineer
Technorithm Engineering,
Pune.



NITIN DONGARE
Sr. Officer Quality
Assurance Kalyani
Technoforge, Pune



TANUJA PAWAR
Software Developer
Sapiens Tech., Bangalore



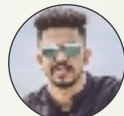
NEHA DONGE
Sr. Software Engg.,
Wipro Limited, Pune.



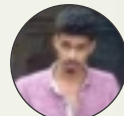
VIVEK PATIL
Product Design Engg.
John Crane, Pune



SALMAN DESAI
Asso. Software Engg.
Tech Mahindra, Pune



AMIT SARVALKAR
Software Developer
CDAC, Pune



ANIKET LOHAR
Assistant Engg.
MSEDCL



RUTURAJ PATOLE
Design Engg., Tox
Pressotechnik India, Pune



RAHUL MALI
Engineer-Sales
Kelvion India Pvt. Ltd.
Pune.



BHARAT MALI
Asstt. Manager, Maharashtra
Fasteners Pvt. Ltd, Pune.



VINAYAK KUMBHAR
Facility Engineer
Amazon



SWAPNIL PATIL
Asst. Engg.
MSEDCL



DIPAK DESAI
Sr. Engineer (Quality)
Ghaite-Patil Industries, Kop



SUHAS VARKAT
Director, Diwan Khadilkar
Consultant Pvt. Ltd.



RUSHIKESH SAJANE
Asst. Engg. MSEDCL



SAIPRASAD GUJAR
MD, Sai Shradha
Engg. & Contractors.



YOGESH PARIT
Junior Bank of India.



ABHISHEK SATPUTE
M.S. Compute Science
University UNC, Charlotte



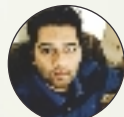
SWAPNALI PATIL
Junior Engg.,
Z. P. Kolhapur



OMKAR SAWANT
MD
Suprabha Light House



AKASH KHARAT
Jr. Engg. MSEDCL



AKSHAY KABBUR
MD
Vijay Electricals



SHRIKANT GAVALI
Jr. Engg. Kokan Railway



AJINKYA SARNAIK
Manager, Indian Oil Tanking
Limited, Navi Mumbai.



AKSHAY SOLAPURE
MD
Avanish Electricals



VIJAY KOLI
MD
Pruthviraj Electricals



PRASAD BARTAKKE
Design & FEA Engineer
Autorenren Motorsports



DINESH C. TARWADE
Assistant Manager
Carraro Technologies Pvt. Ltd.



ANIKET MOHITE
Lead Quality Engg.
Persistent Systems Ltd.
Pune.



AMIT GHOTIKAR
Azure Developer,
Schlumberger, Pune



VIJAY GHEVARI
Facility Engineer
Amazon



RITESH SHUKLA
Software Engg., Persistent
Systems Ltd., Pune



Siddhant Jadhav
Quality Engg.
John Crane Sealing,
Pune.



RUSHIKESH DESHMUKH
Citius Tech Healthcare
Technology, Pune.

विद्यार्थ्यांना शासनाकडून प्रवर्गनिहाय मिळणाऱ्या सवलतींचा तपशील...

विद्यार्थ्यांने शासनाने ठरवून दिलेल्या पध्दतीनुसार आवश्यक कागदपत्रासह अर्ज भरणे बंधनकारक.
शासन नियमाप्रमाणे शैक्षणिक फी माफीसाठी आवश्यक कागदपत्रे.

- विद्यार्थ्यांचा प्रवेश हा Government CAP राउंड मधून झालेला असावा.
- विद्यार्थीकडे महाराष्ट्र शासनाचा रहिवाशी असल्याचा दाखला (Domicile Certificate) आवश्यक.
- कुटूंबाचे एकत्रित वार्षिक उत्पन्न हे ८,००,०००/- (रु. आठ लाख) पेक्षा कमी असावे.

टिप :- एका शैक्षणिक वर्षाकरीता कुटूंबातील फक्त दोनच आपत्तय Scholarship चा उपभोग घेऊ शकतात.

SC/ST :- १००% शैक्षणिक व Development शुल्क माफीसाठी

नियम व अटी:-

- या सवलतीसाठी SC/ST Category चे विद्यार्थी Apply करू शकतात.
- कुटूंबाचे एकत्रित वार्षिक उत्पन्नाची मर्यादा नाही.

VJNT / SBC:- १००% शैक्षणिक शुल्क माफीसाठी.

नियम व अटी:-

- या सवलतीसाठी VJNT / SBC Category चे विद्यार्थी Apply करू शकतात.

Other Backward Class (OBC) :- ५०% शैक्षणिक शुल्क माफीसाठी.

नियम व अटी:-

- या सवलतीसाठी OBC Category चे विद्यार्थी Apply करू शकतात.

Rajarshi Chhatrapati Shahu Maharaj Fee Reimbursement Scheme (EBC Scholarship) :- ५०% शैक्षणिक शुल्क माफीसाठी.

नियम व अटी:-

- या सवलतीसाठी General/Open/MKB Category चे विद्यार्थी Apply करू शकतात.

१. डॉ. पंजाबराव देशमुख वसतिगृह निर्वाह भत्ता:- रु. २०,०००/- प्रतिवर्षी

नियम व अटी:-

- या सवलतीसाठी General Category/TFWS (Open Category) चे विद्यार्थी Apply करू शकतात.
- विद्यार्थ्यांच्या पालकांच्या नावे प्राधिकृत अधिकाऱ्याने प्रतिवर्षी दिलेला अल्पभूधारक शेतकरी/ Registered Labourers दाखला आवश्यक.

२. डॉ. पंजाबराव देशमुख वसतिगृह निर्वाह भत्ता:- रु. ८,०००/- प्रतिवर्षी

नियम व अटी:-

- कुटूंबाचे एकत्रित वार्षिक उत्पन्न हे ८,००,०००/- (रु. आठ लाख) पेक्षाकमी असावे.

टिप:- Merit Basis आधारे प्रत्येक जिल्हातून प्रतिवर्षी ५०० विद्यार्थी निवडले जातात.

Central Minority Scholarship(Religion):- रु. २५,०००/- प्रतिवर्षी

State Minority Scholarship (Religion) :- रु. २५,०००/- प्रतिवर्षी

नियम व अटी:-

- इयत्ता १० वी चे शिक्षण महाराष्ट्रातून पूर्ण झालेले असावे.
- प्रवेश Government CAP / Institute Level मधून असावा.

Primary & Secondary Teacher's Children Scholarship

:- रु. ४,०००/- प्रतिवर्षी

नियम व अटी:-

- आई/वडिल हे प्राथमिक/माध्यमिक शिक्षक असल्याचे प्रमाणपत्र (शिक्षण अधिकाऱ्यांच्या सहीचे)

Documents Required for First Year Engg. Admission

Sr. No.	Documents	SC	ST	NT	SBC	OBC	Open
1.	CET/JEE Marks Sheet	✓	✓	✓	✓	✓	✓
2.	12th Marks Sheet	✓	✓	✓	✓	✓	✓
3.	10th Marks Sheet	✓	✓	✓	✓	✓	✓
4.	10th Marks Passing Certificate	✓	✓	✓	✓	✓	✓
5.	Leaving Certificate	✓	✓	✓	✓	✓	✓
6.	Domicile & Nationality	✓	✓	✓	✓	✓	✓
7.	Caste Certificate	✓	✓	✓	✓	✓	N/A
8.	Caste Validity	✓	✓	✓	✓	✓	N/A
9.	Non Creamy Layer	N/A	N/A	✓	✓	✓	N/A
10.	Colour Photo - 2	✓	✓	✓	✓	✓	✓
11.	Aadhar Card Xerox	✓	✓	✓	✓	✓	✓
12.	Nationalized Bank Account	✓	✓	✓	✓	✓	✓

Documents Required for Direct Second Year Degree Engg. Admission

Sr. No.	Documents	SC	ST	NT	SBC	OBC	Open
1.	MSBTE Marks Sheet	✓	✓	✓	✓	✓	✓
2.	Provisional Passing Certificate	✓	✓	✓	✓	✓	✓
3.	10 th Marks Sheet	✓	✓	✓	✓	✓	✓
4.	10 th Marks Passing Certificate	✓	✓	✓	✓	✓	✓
5.	Leaving Certificate	✓	✓	✓	✓	✓	✓
6.	Domicile & Nationality	✓	✓	✓	✓	✓	✓
7.	Caste Certificate	✓	✓	✓	✓	✓	N/A
8.	Caste Validity	✓	✓	✓	✓	✓	N/A
9.	Non Creamy Layer	N/A	N/A	✓	✓	✓	N/A
10.	Colour Photo - 2	✓	✓	✓	✓	✓	✓
11.	Nationalized Bank Passbook Xerox	✓	✓	✓	✓	✓	✓
12.	Aadhar Card Xerox	✓	✓	✓	✓	✓	✓

खालील शहर व ग्रामीण भागातील विद्यार्थ्यांसाठी कॉलेजची बस सुविधा

- ▶ PHULEWADI ▶ BAPURAM NAGAR ▶ SALWAN-TISANGI ▶ WARANA-KODOLI ▶ HOCKEY STADIUM ▶ KALAMBA ▶ GHUNGUR
 ▶ KANDUR ▶ SANGRUL ▶ KAWALA NAKA ▶ KHOCHI ▶ NANDGAON ▶ KUMBHOJ-NARANDE